

TROON SENIOR CITIZENS WELFARE COMMITTEE

By Dylan Morrison, Fraser McArthur & Laura Watson

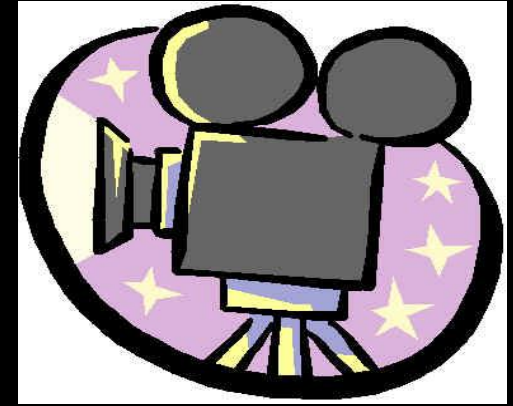
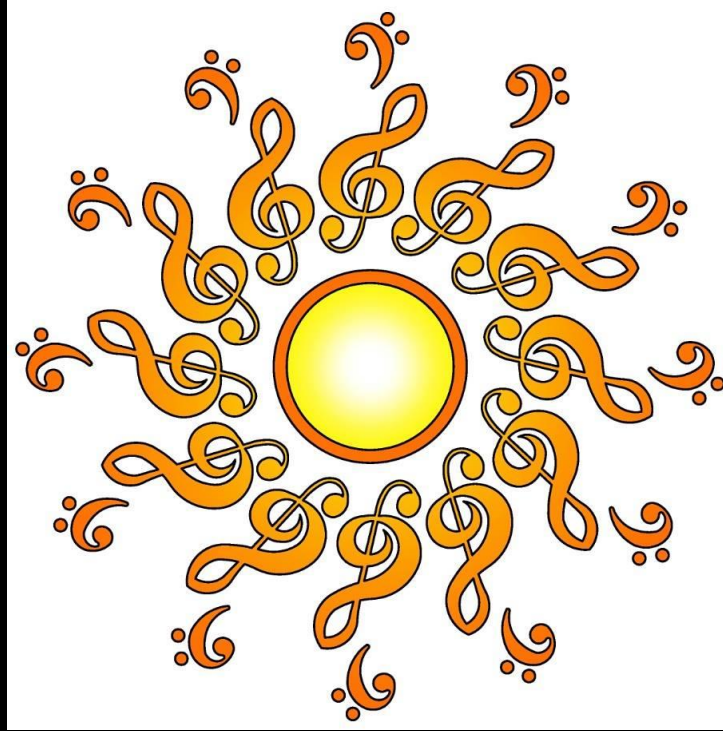
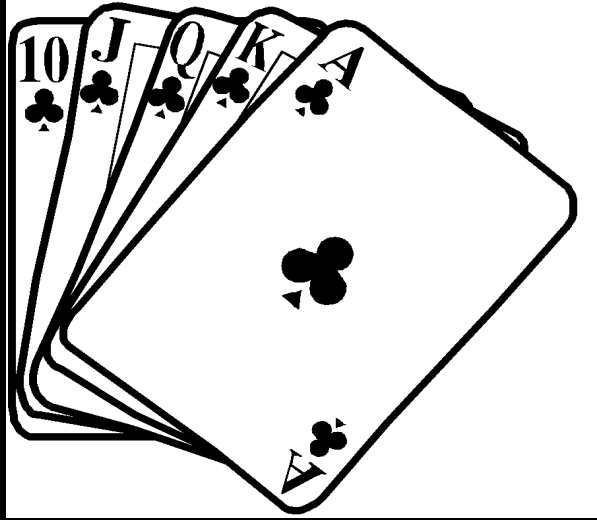






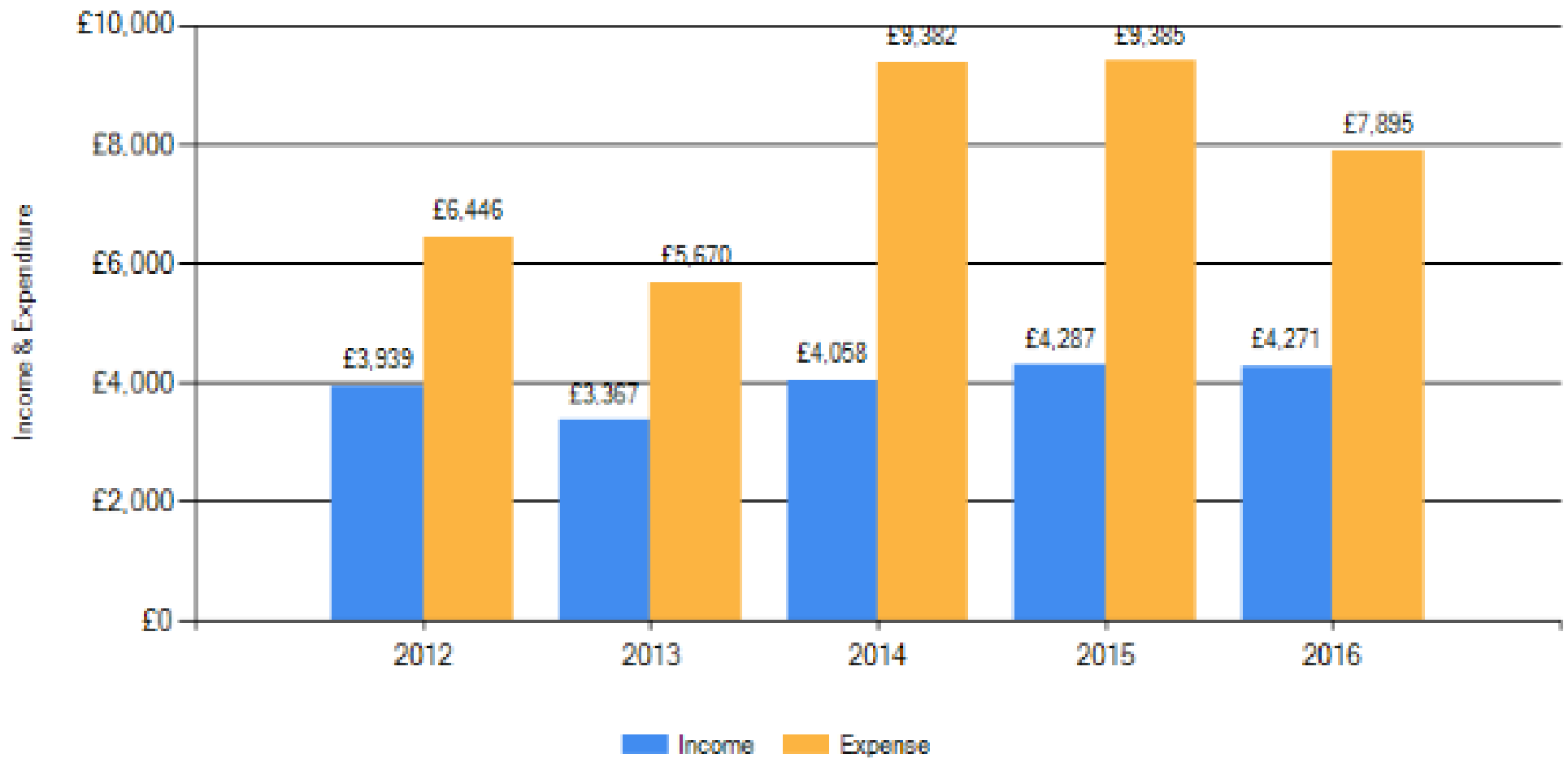








Income / Expenditure Totals





B I N G O

1	16	40	47	72
12	18	●	50	74
●	22	●	46	64
8	17	32	●	68
6	28	37	54	61

B I N G O

5	29	42	52	68
14	17	38	60	75
7	22	FREE SPACE	49	62
13	28	33	46	63
3	27	32	●	73



Beetle Drive

The Beetle has 14 parts which are designated to the following numbers of the dice:

1. THE HEAD
2. THE BODY
3. A FEELER (2)
4. AN EYE (2)
5. A WING (2)
6. A LEG (6)

EACH PART MUST BE THROWN SEPARATELY.
 e.g. A 5 FOR EACH WING, A 6 FOR EACH LEG etc.
 Each Part of the body drawn scores 1 point.
 Thus a Beetle drawn complete scores 14 points.

1		SCORE 12	CHECKED	1	12
2		SCORE 13	CHECKED	2	13
3		SCORE 13	CHECKED	3	13
4		SCORE 7	CHECKED	4	7
5		SCORE 6	CHECKED	5	6
6		SCORE	CHECKED	6	
7		SCORE	CHECKED	7	
8		SCORE	CHECKED	8	
9		SCORE	CHECKED	9	



THANK YOU

