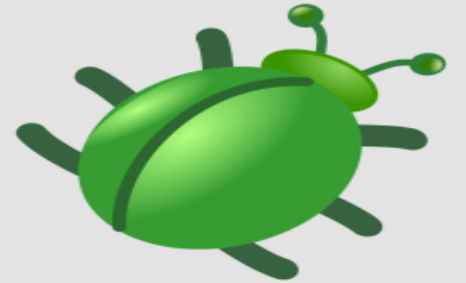


# How to read questions carefully:

## Identify Command Words and BUGS the question

Study Skills



# S4 Family Learning Evaluation Form 2023



# National 4/5 Geography Command Words

- **Describe:** say **what** something is like
- **Explain:** say **why** something has happened. Use words like because, due to...
- **Give reasons:** similar to **explain**, however it uses a **source**. The birth rate is high because....
- **Match:** usually **linked to a map** or photo. Pair up the feature with the grid reference.
- **Give map evidence:** Using a map. You **must include** names of places or grid references.
- **Give advantages and/ or disadvantages:** why is something good or bad. You are best to give both advantages **and** disadvantages to help break up the question.

# Higher Geography Command Words

- **ANALYSE:** Identify **links** and relationships e.g rainfall & river levels
- **EVALUATE:** Describe a solution and **judge** its success. Provide an overall conclusion
- **ACCOUNT FOR:** Using a **source**, **give reasons** for an event
- **DISCUSS:** Provide **different views** about an issue or argument
- **TO WHAT EXTENT:** Describe a strategy and offer a balanced, evidence based conclusion

Box  
Underline  
Glance  
Circle

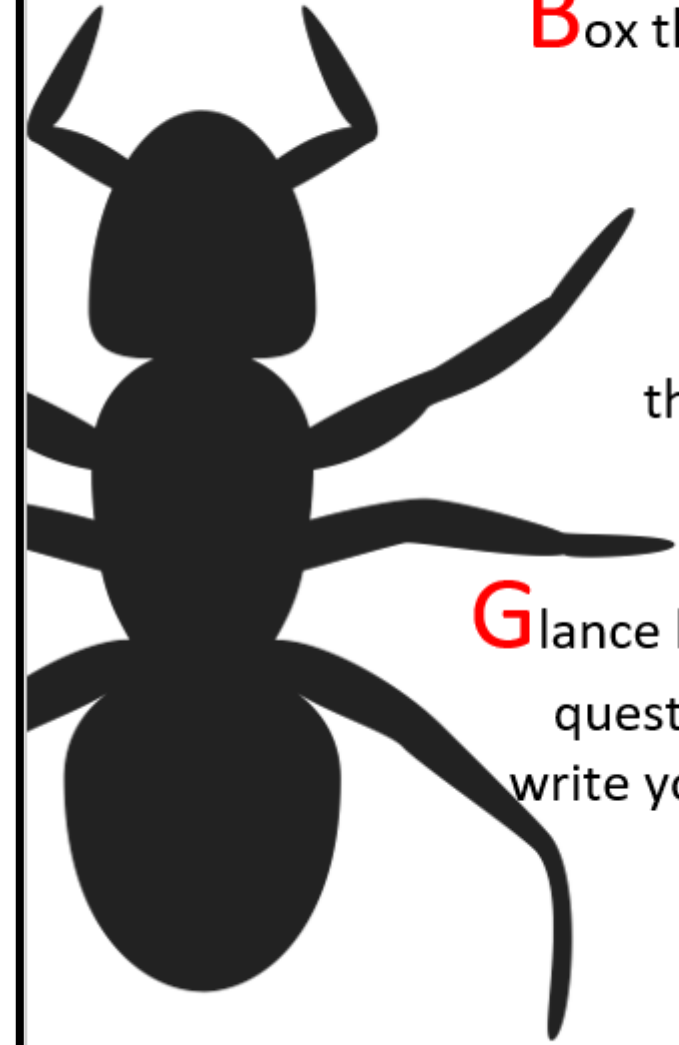
# BUGS the question

**B**ox the command  
word

**U**nderline  
the geography

**G**lance back at the  
question as you  
write your answer

**S**ircle the  
marks





Box  
Underline  
Glance  
Circle

Look at Diagram Q7.

Developments such as wind farms can cause land use conflicts.

For a named area you have studied, **explain** why land use conflicts occur there.

**Question 9**

Study the Ordnance Survey map extract (Item B) of the Wolverhampton area.  
Find the old industrial area in grid square 9499. This area is being redeveloped.  
Using map evidence, **explain** why this area is attractive for industry.

6

**Question 10**

Study the Ordnance Survey map extract (Item B) of the Wolverhampton area.  
Using map evidence, **describe** methods which have been used to reduce traffic congestion in and around the centre of Wolverhampton.  
You should make use of grid references in your answer.

4

[Turn over

# Modern Studies Example

(e) To what extent are **offenders** the group most affected by crime? 20

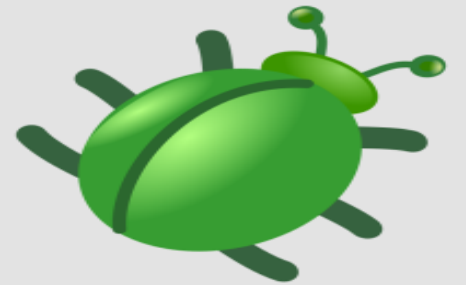
OR

(f) To what extent are non-custodial responses to crime more effective than custodial responses? 20



# Can you write an exam question?

Study Skills



What's the question?  
Think about the command word

	General marking instructions for this type of question	Max mark	Detailed marking instructions for this question
	<p>1 mark for a valid point.</p> <p>2 marks for a developed point.</p> <p>Maximum of 1 mark for a list of improved facilities (for example better housing, better toilets, better water supplies).</p> <p>If no specific city/slum is referred to, mark out of 3.</p>	4	<p><b>If Rio de Janeiro chosen</b></p> <ul style="list-style-type: none"> <li>• wooden shacks have been upgraded to permanent dwellings with some services (1 mark) for example, clean-piped water has been provided to help reduce the spread of diseases (1 mark)</li> <li>• self-help schemes are where local people are provided with materials like bricks to upgrade their homes (1 mark)</li> <li>• some prefabricated houses have been built in Rocinha by the Brazilian Government (1 mark) with basic facilities like toilets and electricity (1 mark)</li> <li>• the residents have been given legal rights to the land where their house is built (1 mark)</li> <li>• roads have been built/improved in the favela allowing services like rubbish collections to take place (1 mark)</li> <li>• in some favelas cable car systems have been constructed to improve transport for residents (1 mark)</li> <li>• there have been some schools and health clinics provided for residents (1 mark)</li> <li>• some charities have also donated money to help improve the standard of living of people in slum housing (1 mark) for example, by providing computers in schools (1 mark)</li> <li>• security has been improved by having more police patrols (1 mark) which have helped to reduce drugs related crime. (1 mark)</li> </ul> <p><b>Or any other valid point.</b></p>

What's the question?  
Think about the command word

Diagram Q11B Quote from development charity website

'By 2030, it is estimated that 1 in 4 people on the planet will live in a shanty town or other informal settlement. Due to population growth and rural-urban migration, these slums are here to stay.'

- Referring to a developing world city you have studied, explain different ways shanty towns are being improved **4 marks**

What's the question?  
Think about the command word

General marking instructions for this type of question	Max mark	Specific marking instructions for this question
<p>For <b>1 mark</b>, candidates may give one detailed impact, or a limited description/explanation of two impacts.</p> <p>Care should be taken to ensure impacts are relevant to specific case studies and not overly generalised.</p>	3	<p><b>For Poland to Scotland Voluntary Migration</b></p> <p><b>Impacts on donor country</b></p> <ul style="list-style-type: none"> <li>• Fewer people means less pressure on limited resources like good quality housing and healthcare allowing living standards to improve. <b>(1 mark)</b></li> <li>• This will also help reduce the unemployment rates for the country and migrants return with new skills. <b>(1 mark)</b></li> <li>• Birth rate is lowered as male migrants are away so there will be a decline in the population further reducing strain on resources. <b>(1 mark)</b></li> <li>• Migrants often send money home to their families meaning people have more money in Poland helping to improve standard of living. <b>(1 mark)</b></li> <li>• The most educated and healthy leave which could hinder development and it tend to be older population that stay behind. <b>(1 mark)</b></li> </ul> <p><b>Impacts on receiving country</b></p> <ul style="list-style-type: none"> <li>• The government receives tax from migrant workers who are doing jobs that British people will not do due to low wages and unsociable hours, including fish processing, farm work and cleaning. <b>(1 mark)</b></li> <li>• Generally, migrants are perceived as hard workers and many are highly skilled and/or graduates so brought sought after skills during the UK construction boom. <b>(1 mark)</b></li> </ul>

Question	General marking instructions for this type of question	Max mark	Specific marking instructions for this question
			<ul style="list-style-type: none"> <li>• The language barrier and cultural differences can lead to racial tension with ethnic groups tending not to integrate which can add to the tension. <b>(1 mark)</b></li> <li>• May lead to the development of over-crowded, multi occupancy accommodation due to the pressures on housing in certain areas. <b>(1 mark)</b></li> <li>• The education system may become strained due to the number of children for whom English is not their first language. <b>(1 mark)</b></li> <li>• Due to the number of migrants entering Scotland this can lead to increased unemployment rates as a knock-on of the economic downturn. <b>(1 mark)</b></li> <li>• Positives for a multicultural society would include Polish shops or aisles in supermarkets. <b>(1 mark)</b></li> </ul> <p>Or any other valid point</p>

What's the  
question?  
Think about  
the  
command  
word

#### Question 4

With reference to a migration flow you have studied:

- (a) **explain** the push **and** pull factors for this migration; **and** 4
- (b) **discuss** the impacts of this migration on **either** the donor **or** the receiving country. 3